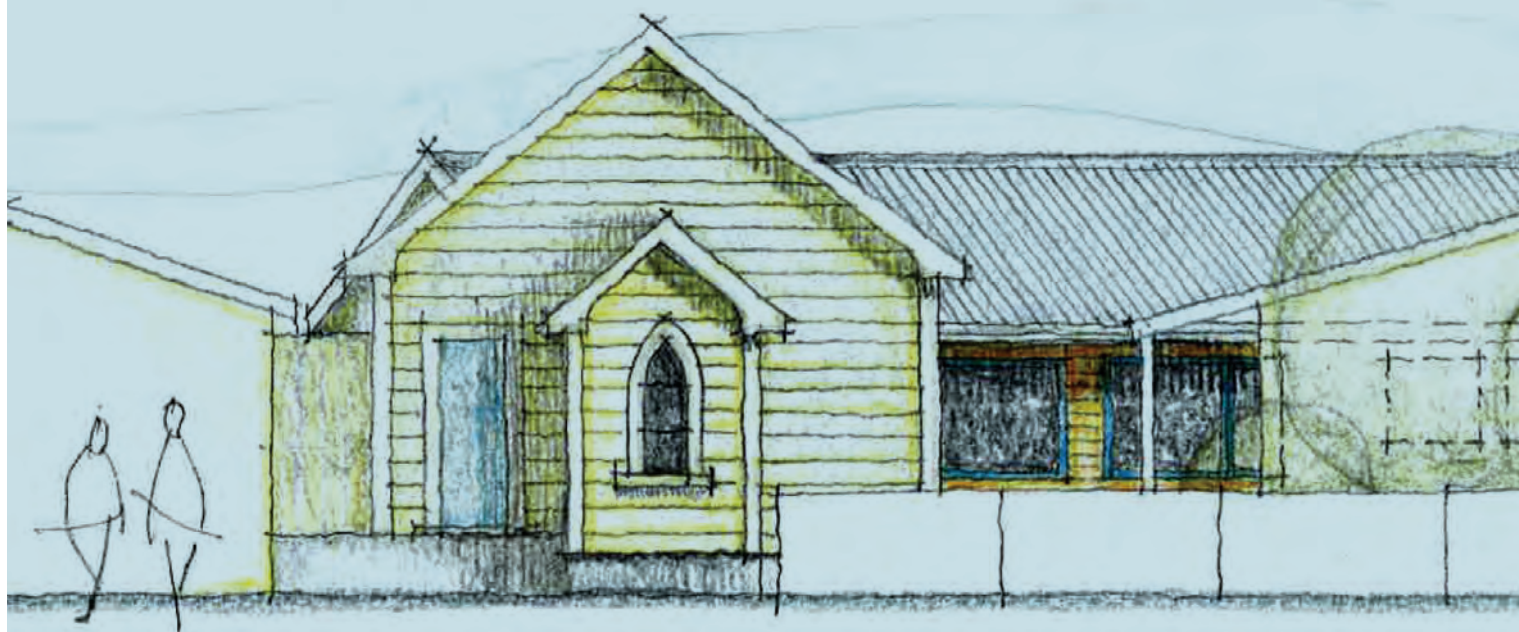


# St Marks

Annual Report 2020-21  
Te Whare Oranga



# “I felt seen, supported and safe in these vulnerable places.”

*Before walking into St Marks I lived as a leper. Isolated, ashamed, sad. Bits of my spirit and life were falling off or shrivelling up and becoming atrophied. I had stopped living. I was existing in the dark. I had come to believe in this conclusion – this is who I am, and I deserve nothing more. I was used to the dim.*

Then in the distance a crack appeared and a wee sliver of light shone through. It was St Marks. For months I sat in that dark, collecting bottles at my feet, staring at the sliver of light.

It scared me, what was it, what would it mean, what would it ask of me?

The first thing I learnt was that St Marks has rules. This elicited my usual dubious response. I don't like rules and in the past when I've poked at them, I've found they often lack substance.

What I came to understand however, is that these rules and processes provide a living foundation of this Therapeutic Community. The daily structure, routine, safety, fairness, purpose, dignity, equality and contribution that we all uphold and in doing so, become part of a whole.

Once I realised this I began understanding and began to trust the team and the process. There have been challenges and I have had moments of frustration. I have been confronted and conflicted within myself and in the TC. I've been harassed, overlooked, and

yellow streaked. I have learned a lot in these moments personally but also that St Marks expands and contracts around a very robust core.

I felt seen, supported and safe in these vulnerable places.

Not only could I trust the process, I could truly invest myself in it and in doing that, my journey now feels shared. Being vulnerable takes both surrender and courage. I feel privileged to have a safe space to experience that.

Here our struggles have a place and so does our capacities to each grow and take joy and strength from seeing ourselves in others.

*Former St Marks Resident*

# Message from the Chair



## Jim Hasseldine Board Chairman

*It is a privilege to present my 2021 report to the Annual General Meeting.*

St Marks has had another busy and eventful year as we have worked towards the commencement of the rebuild of the main Accommodation Block. This process has been ongoing since initial planning starting in 2019 and a number of hurdles have had to be crossed to get the actual construction process underway. There have been a number of issues to be resolved including Building Consent, Drainage and Financial Planning and Fundraising.

The New Building has been designed by Tim Barton and the contract was eventually let to Andrew Lawson on 14 June 2021 and since then the Old Men's Accommodation Block has been demolished and the Groundwork prepared, Foundations laid, and at the time of writing this report the Timber Framework is up and Roof Trusses on site. A sub committee of myself, Paul Hanton, Peter Diack and John Buzan who has been a previous member of St Marks Board and a Past Chairman, are overseeing the Build Process.

We are very grateful to have the assistance of John Buzan in this group as he has many years experience in the area of Facilities management and has overseen other construction projects. Thank you John!

This year after a definite slump in the floor of the Old Church Building, the floor was removed and new Piles installed as required with the floor & carpet then being replaced. This was carried out very efficiently by Andrew Lawson and his team which minimised the disruption for our residents.

The other major upgrade of our site this year was an additional bathroom & bedroom being created in the Women's House to make it more practical for its residents. This seems to be a useful improvement and appreciated.

The offsite support house has been named Te Rito Arahi and has now been in use since my last report. The purpose of it is to provide Accommodation for residents who have completed their programme at St Marks and would like to live for up to 6 months in a Supportive Environment with others who have also completed their time at St Marks. A number of residents and a "House Supervisor" provide a sense of Continuity and the chance to Cement in good lifestyle habits. This appears to be

a growing part of the role of St Marks. This is a part of the Vision of the Board to ensure the best possible opportunity for every client who comes to St Marks for help in their journey.

I can't say enough how much we appreciate the work of CEO Paul Hanton and the staff team he leads. These people are amazing and their commitment to helping anyone who comes through these doors is just fabulous. Thank you, all of you!

Thank you to our Patron Ian Cameron, our Board Members Charles Murdoch, Peter Diack, Barbara Rocco, Bridget Orman and Alastair Hebbard. Your work for St Marks is very much appreciated, Thank You! We have at our last meeting Co-opted a new member to the Board Jennifer Moxon, she brings a very useful set of skills to our Board and this enhances our Governance and Strategic Planning process.

I need to mention our Residents who come seeking to make changes to their lives. Your courage and willingness to embrace a new direction in your lives I find to be inspiring. I trust that the work by the Board and Staff at St Marks will continue to be a Catalyst for You.

# Message from the CEO



## Paul Hanton CEO

*Tēnā koutou katoa.*

It has been a busy year, remembering that this report is July '20 to July '21, we saw:

- The first wave of Covid and lockdowns
- Staff members leaving for new opportunities (including retirement), in some cases new cities, even new countries
- New staff members arriving bringing a new skills mix
- We undertook and passed a three year certification audit
- We agreed to build a brand new accommodation block

- We set up a new support house in the community for graduates of the programme
- We switched all our IT to a cloud based system

As if that were not enough we reviewed our whole education programme, our 'phases', repaired (long overdue) our main lounge floor and started employing 'trainee' workers.

We had many successful graduations including one tāne who has stayed on to be a mentor, giving heaps back to the community.

On a personal level I have been in deep awe and gratitude to our team, they go above and beyond. The team leader, Tere has stepped into the role well, our night and weekend supervisors are an

asset we could not do without and Nigel (the house cat) and Cookie (our therapy dog, kind of) are integral parts of our whānau.

July 2021 – July 2022 will see a state of the art, fully solar powered accommodation block which will all but see an end to any room sharing. This annual report is a sign of things to come; we will be more outward facing, more openly proud of what we have and what will be, always with humility and compassion. My dream job continues to be so.

*Ngā mihi  
Nā Paul*

**“If you come to St Marks and fully commit to trusting in the process, you will leave here trusting in life again.”** *Former Resident*

# Board Members



## Jim Hasseldine Board Chairman

I grew up in Christchurch where my parents had a strong community focus as part of their lives and I have followed that legacy. I started initially through involvement in the Methodist Church but in my early 20's became involved in Red Cross Emergency Management. I did this before going overseas with my wife on our OE and then on settling in Blenheim in 1981 I then resumed my community involvement. In that time, I have been a part of Blenheim South Rotary Club (Past President), Motor Trade Association ( including Branch President), Automobile Association, Brayshaw Park Administrators and a number of other committees.

I have worked in the Motor Industry all my working career including running the business where I currently work for over 20 years. I have served nationally on the MTA Board Advisory Committee and been a part of the St Marks Board for over 15 years including the last 4 as Board Chairman.

I have a passion for the work of St Marks & the care of its past, current and Future Residents.



## Charles Murdoch

Born, but arguably not bred, in Marlborough I am currently a practicing lawyer at Wisheart Macnab & Partners. I am married to Sue with three adult children and two grandchildren, with another on the way.

I have been a member of the St Marks Board for some 12 or more years and was a founding trustee of the St Mark Charitable Foundation which was established to help support St Marks' on a financial basis.

I also volunteer at the Marlborough Community Law Centre.

For leisure I have always enjoyed anything to do with basketball having played, refereed and coached. I still pretend to play (blocking out the pain of failing knees and ankles) aiming to represent Marlborough in the upcoming Masters Games which are to be held here in Marlborough next month.

If I have any spare time I enjoy spending time with my wife, annoying my children, and travelling. Most recently we have been trying to explore as much of NZ as we can, and in the last 12 months, in between lockdowns, we have been as far north as Cape Reinga and as far south as Bluff.



## Barbara Rocco

I have been a Board member of St Marks for 10 years. I have many years' experience in governance in the health and disability sector, particularly in the service quality area.

I'm forever impressed and humbled by the life-changing work that goes on at St Marks and am pleased to be able to contribute in a small way.



## Bridget Orman

I have lived in Marlborough for the past 30 years, coming from Wellington where I had been working as secretary to Maris O'Rourke, CEO, Ministry of Education. I have reared three children, now all grown up with their own families. In 1993 after project managing our new build in Rapaura, I joined the Marlborough Chamber of Commerce as their Executive Officer, the beginning of a long and interesting relationship with the Blenheim community active in clubs and their committees. With an involvement in women's service through the Zonta Club of Marlborough, we raised funds for projects at St Marks as well as me being Zonta's representative with the Blenheim South Rotary Club committee for their annual Dinner and Auction fund-raising event. This was initially held at the Omaka Marae then later at the newly built Marlborough Convention Centre. I was pleased when Lois Millar suggested me as a Board Member at St Marks as I have a personal interest in the rehabilitation success of their programmes.



## Peter Diack

As a retired Chartered Accountant & Investment Adviser, I have had many years of governance experience, primarily in the roles of trusted adviser, Director & Trustee with private companies & Trusts.

Currently I sit on the Board of 2 other Charitable Trusts and have been a Board member of St. Marks for 6 years I feel privileged and humbled in being able to assist St Marks in their role of saving and turning peoples lives around.

## Alastair Hebbard

Alastair has been a Board member this year.

*We look forward to welcoming to new Board Members this coming year.*

Jennifer Moxon and John Patchett.

# We are pleased to say that the Staff & Board of St Marks have achieved 100% Covid vaccination coverage.

# Whānau Korero

## Our Residents Speak

For many residents, St Marks means a sense of belonging. This can often be profoundly meaningful after a long period of feeling alone in the personal struggle with addiction. Within the St Marks programme the feeling of being connected and sharing your journey, struggles and joys with others is fostered. We learn to be open and honest with each other and with ourselves. Accountability soon becomes a virtue.

To begin healing and growing we first have to trust the process and accept vulnerability.

St Marks provides a safe home and Therapeutic Community whānau for us to do so. A chance to regain ones' balance, strength, confidence and faith in life again.

The St Marks programme is not easy and it's not a holiday. What you gain, however, is ultimately empowering. This is because it comes from the hard work you put in, you can really own this, and carry it into your future.

*"If you do the next right thing, the next right thing will happen."*

*"I can't thank you all at St Marks for your time and care for helping me find me again from the wreckage of my upbringing and past, I returned to my hometown, seen my children and returned back to XXXX. My soul and heart full; my parents get their daughter back, my grandparents get their granddaughter back, my cousins get their cousin back, my uncles and aunties get their niece back, my brothers and sisters get their big sister back, my nieces and nephew get their aunty back, and most of all, my children get their mother back as her authentic self who has learnt self love and self respect. St marks helped me see that I am so much more than a f\*\*k up I'm finally ok with me and LOVE and respect me as I am, and I can say I am feeling complete . Good things on the horizon for me and I cant describe the gratitude I have for this therapeutic community. I've been to most rehabs and tried everything so I thank all the staff for being a part of my everlasting journey. St marks will always be special to me, much aroha to my fellows who are doing this new and different thing we call recovering f\*\*k yes !!!!"*

*"St Marks means to me a sense of belonging and a feeling of being connected to a group. It is a chance to balance myself and regain my strength and confidence to carry on again."*



# Annual Statistics

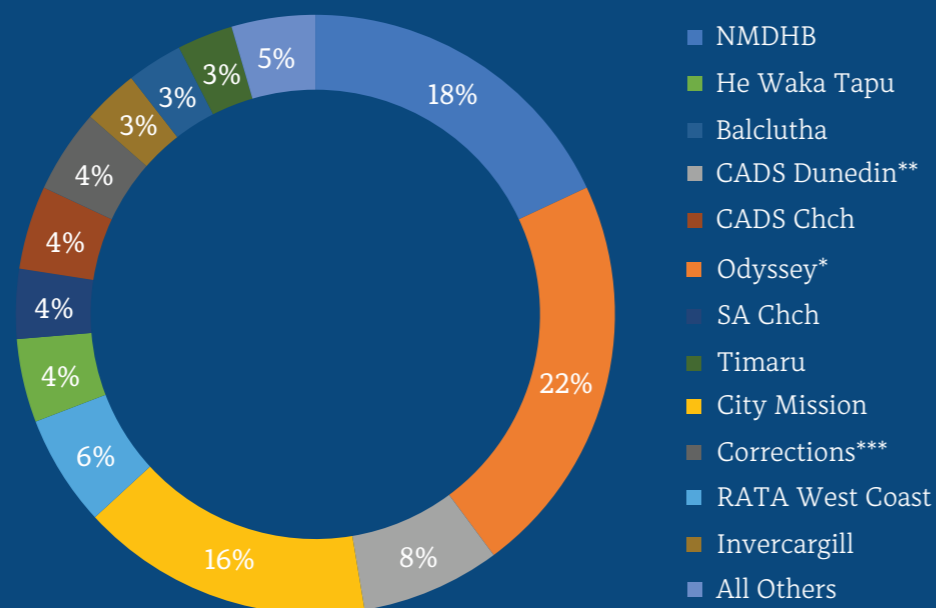
1st July 2020 – 30th June 2021

## Total referrals

134



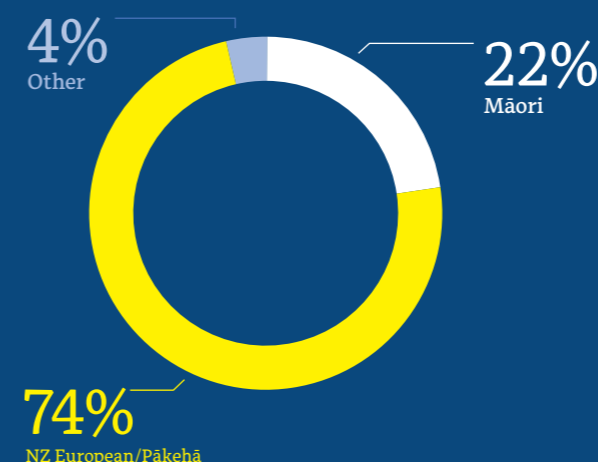
## Referral Sources



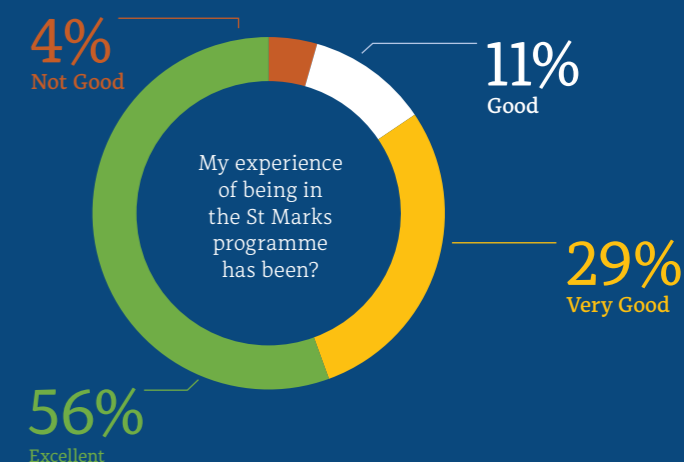
\* Odyssey includes ADAS \*\* Now known as SAS Dunedin \*\*\* Some ADAS referrals are also Corrections

All residents leaving are offered the chance to give us feedback, that we might improve

## Ethnicity



## Overall Experience



If tāngata whai ora that start the residential programme stay over two weeks we see a 84% completion rate

### Total starts

70

70 people started in the time period from 134 referrals. 41 withdraw before there entry date, 4 were declined, 29 were on waitlist at end of July 2021

### Completions

51%

of people successfully completed our programme

### Self Discharge

14

70% of self discharges are in the first two weeks, showing people may be unprepared to be at rehab or make the changes needed

### Service Discharge

18

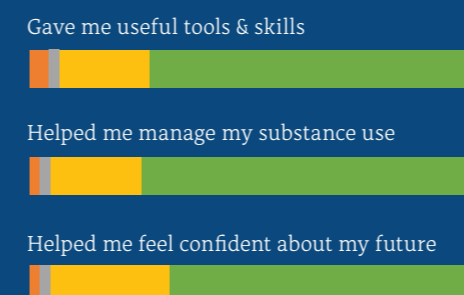
64% of service discharges are in the first two weeks by people breaking rules or not complying with the programme

84%

If people stay longer than two weeks we have an 84% completion rate

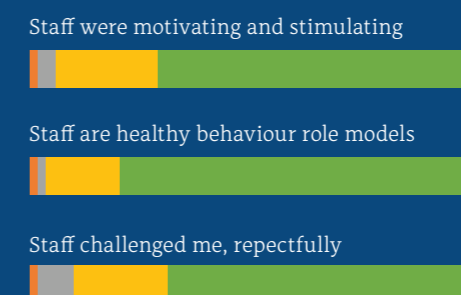
## The Programme

The programme was evaluated by tāngata whai ora using a 5-point Likert scale, from completely disagree to completely agree (1-5)



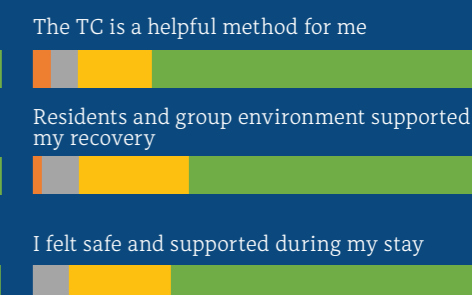
## The Staff

The staff were evaluated by tāngata whai ora using a 5-point Likert scale, from completely disagree to completely agree (1-5)



## The Community

The community was evaluated by tāngata whai ora using a 5-point Likert scale, from completely disagree to completely agree (1-5)



1 2 3 4 5

\* You will note that completions and discharges amount to more than the 70 starts, this is due to people already being on programme before the start of the year (therefore not counted in starts) and again at end of the year (i.e. some discharges were from last year starts, and some that have started already are yet to successfully complete as they are still on programme).

# Where We Are, Where We Are Going?

## Our contracts:

We have three contracts:

South island DHB's  
(through NMDHB)

11  
Beds



Dept. of Corrections

1  
Bed



Nelson Marlborough  
DHB (the 0.5 is social detox)

3.5  
Beds



Total Beds

15.5



## Where will we be in a year from now?

- We will be using one of our spare beds for private clients, generating non contracted revenue
- We will be using one of our spare beds, as needed as a crisis bed, sorting out funding after we meet the emergency need

## Whānau inclusive:

### Where are we now?

- We ask tāngata whai ora how they would like whānau involved in their care
- We have a section on our website for whānau information
- We invite whānau to graduations

### Where will we be in a year from now?

- We will be inviting whānau to take part in planning and reviews
- We will be developing a whānau information booklet

## Our profile:

### Where are we now?

- We have a website
- This annual report

### Where will we be in a year from now?

- We will have a 'walk through' video of our whare on the website
- We will have new information booklets
- We will visit all our referrers at least once

# Performance Report

St Marks Society  
For the year ended 30 June 2021

Prepared by Wallace Diack Chartered Accountants Limited

## Contents

3	Compilation Report
4	Entity Information
6	Statement of Service Performance
7	Statement of Financial Performance
8	Statement of Changes in Equity
9	Statement of Financial Position
10	Statement of Cash Flows
11	Statement of Accounting Policies
13	Notes to the Performance Report
18	Independent Review Report

## Compilation Report

### St Marks Society For the year ended 30 June 2021

Compilation Report to the Trustees of St Marks Society.

#### Scope

On the basis of information provided and in accordance with Service Engagement Standard 2 Compilation of Financial Information, we have compiled the financial statements of St Marks Society for the year ended 30 June 2021.

These statements have been prepared in accordance with the accounting policies described in the Notes to these financial statements.

#### Responsibilities

The Trustees are solely responsible for the information contained in the financial statements and have determined that the Special Purpose Reporting Framework used is appropriate to meet your needs and for the purpose that the financial statements were prepared.

The financial statements were prepared exclusively for your benefit. We do not accept responsibility to any other person for the contents of the financial statements.

#### No Audit or Review Engagement Undertaken

Our procedures use accounting expertise to undertake the compilation of the financial statements from information you provided. Our procedures do not include verification or validation procedures. No audit or review engagement has been performed and accordingly no assurance is expressed.

#### Independence

We have no involvement with St Marks Society other than for the preparation of financial statements and management reports and offering advice based on the financial information provided.

#### Disclaimer

We have compiled these financial statements based on information provided which has not been subject to an audit or review engagement. Accordingly, we do not accept any responsibility for the reliability, accuracy or completeness of the compiled financial information contained in the financial statements. Nor do we accept any liability of any kind whatsoever, including liability by reason of negligence, to any person for losses incurred as a result of placing reliance on these financial statements.



Wallace Diack Chartered Accountants Ltd

Blenheim

Dated: 3 November 2021

# Entity Information

## St Marks Society For the year ended 30 June 2021

'Who are we?', 'Why do we exist?'

### Legal Information

Legal name of entity:	St. Marks Society
Other Name of Entity	St Marks Residential Addiction Treatment Centre
Legal basis of entity:	Incorporated Society and Registered Charity
Charities registration number:	CC41142
IRD Number:	031-423-490

### Entity's Purpose or Mission

St. Marks Society will provide people with the necessary skills, tools and knowledge that promote a healthy body and mind. In doing so we aim to support recovery for individuals and whānau, and to reduce the harm that alcohol and other drug addiction causes in communities and society as a whole.

### Entity Structure

Trust Structure: Our Trusts states that we have no fewer than 4. and up to 9 members. We currently have 6 Trustees that constitute our governance board, including the Chairman, Deputy Chair and Treasurer.

Operational Structure: Our operations are managed by a team of sixteen paid staff and a few unpaid volunteers who support our service throughout the year. We employ a Chief Executive, one Clinical Leader, three Counsellors (AOD Practitioners), Two part time Administrators, one Kaimanaaki Tāngata whai ora, one part time Nurse, one part time addiction consultant doctor, 6 part time Supervisors.

### Main Sources of Entity's Cash and Resources

St Marks has received its income from a mixture of Government contracts, mainly from the DHB and a minor part from the Department of Corrections. Furthermore, we have received some donations and grants.

### Main Methods Used by Entity to Raise Funds

Client fundraising activities and grant applications

### Entity's Reliance on Volunteers and Donated Goods or Services

St Marks volunteers who commit their time on a weekly basis and donated goods from the local community and businesses.

### Address

61 Main Street  
Blenheim 7201  
Phone: 03 578 0459  
Fax: 03 5789 0406  
Email: admin@stmarks.co.nz

### Entity Information

#### Accountant

Wallace Diack Chartered Accountants Limited  
Level 2, Youell House  
1 Hutcheson Street  
Blenheim

#### Reviewer

David Boon  
69 Cleghorn Street  
Redwood Village  
Blenheim

#### Banker

ASB  
60 Market Street  
Blenheim

# Statement of Service Performance

## St Marks Society

For the year ended 30 June 2021

'What did we do?', 'When did we do it?'

### Outcomes

Data from our Continuing Care programme shows that residents of St Marks have experienced relevant significant recovery from Alcohol and Drug use. They have also experienced subjective improvements in physical health, daily functioning, work, housing, relationships and spirituality.

	2021	2020
<b>Outputs</b>		
Residential Treatment Programme Clients	-	82
Detox Treatment Clients	-	28

### Additional Information

We have received the following remarks from the residents :

"St Marks changed my life for the better - great life I now have"  
 "I use my St Marks tools every day. I write myself weekly goals and have begun a course on how to be happy"  
 "Have completed foundations in Counselling Course and currently am studying towards a degree in counselling at NMIT. Have been clean since St Marks"  
 "Will always be grateful to St Marks for helping me regain my life"  
 "It was awesome, just what I needed. Have been sober since"  
 "Have stayed sober since leaving St Marks. Have turned my life around, I did not complete but achieved enough."  
 Mother Reports "St Marks did a wonderful job with my son, we are so grateful."

# Statement of Financial Performance

## St Marks Society

For the year ended 30 June 2021

'How was it funded?' and 'What did it cost?'

	NOTES	2021	2020
<b>Revenue</b>			
Donations, fundraising and other similar revenue	1	33,724	37,992
Fees, subscriptions and other revenue from members	1	886	5,165
Revenue from providing goods or services	1	1,099,887	1,039,536
Interest, dividends and other investment revenue	1	3,177	6,152
Other revenue	1	1,784	2,583
<b>Total Revenue</b>		<b>1,139,459</b>	<b>1,091,427</b>
<b>Expenses</b>			
Volunteer and employee related costs	2	698,480	788,055
Costs related to providing goods or service	2	317,644	235,789
Other expenses	2	30,573	36,069
<b>Total Expenses</b>		<b>1,046,697</b>	<b>1,059,913</b>
<b>Surplus/(Deficit) for the Year</b>		<b>92,762</b>	<b>31,514</b>

## Statement of Changes in Equity

St Marks Society

For the year ended 30 June 2021

	NOTES	2021	2020
<b>Trust Capital</b>			
Opening Balance		1,753,435	1,721,921
<b>Increases</b>			
Trustees Income for the Period	6	92,762	31,514
<b>Total Increases</b>		<b>92,762</b>	<b>31,514</b>
<b>Total Trust Capital</b>		<b>1,846,197</b>	<b>1,753,435</b>

This report forms part of the performance report. The performance report and associated financial and non-financial reports should be read in conjunction with the attached Reviewer's Report.

## Statement of Financial Position

St Marks Society

As at 30 June 2021

'What the entity owns?' and 'What the entity owes?'

	NOTES	30 JUN 2021	30 JUN 2020
<b>Assets</b>			
<b>Current Assets</b>			
Bank accounts and cash	3	210,383	41,186
Debtors and prepayments	3	71,420	80,002
Other Current Assets	3	100,000	100,000
Term Deposits		94,463	206,138
Work in progress - Men's Accommodation Rebuild		70,996	42,616
<b>Total Current Assets</b>		<b>547,262</b>	<b>469,943</b>
<b>Non-Current Assets</b>			
Property, Plant and Equipment	5	1,404,866	1,399,350
<b>Total Non-Current Assets</b>		<b>1,404,866</b>	<b>1,399,350</b>
<b>Total Assets</b>		<b>1,952,129</b>	<b>1,869,293</b>
<b>Liabilities</b>			
<b>Current Liabilities</b>			
Creditors		19,029	21,442
Employee costs payable	4	73,422	74,822
Other current liabilities	4	13,481	19,595
<b>Total Current Liabilities</b>		<b>105,932</b>	<b>115,858</b>
<b>Total Liabilities</b>		<b>105,932</b>	<b>115,858</b>
<b>Total Assets less Total Liabilities (Net Assets)</b>		<b>1,846,197</b>	<b>1,753,435</b>
<b>Accumulated Funds</b>			
Accumulated surpluses or (deficits)	6	1,846,197	1,753,435
<b>Total Accumulated Funds</b>		<b>1,846,197</b>	<b>1,753,435</b>

This report forms part of the performance report. The performance report and associated financial and non-financial reports should be read in conjunction with the attached Reviewer's Report.

# Statement of Cash Flows

St Marks Society

For the year ended 30 June 2021

'How the entity has received and used cash'

	2021	2020
<b>Cash Flows from Operating Activities</b>		
Donations, fundraising and other similar receipts	33,724	37,992
Fees, subscriptions and other receipts from members	886	5,113
Receipts from providing goods or services	1,107,533	1,023,977
Interest, dividends and other investment receipts	3,177	6,152
Cash receipts from other operating activities	1,784	-
GST	(5,499)	(3,189)
Payments to suppliers and employees	(1,016,696)	(1,034,973)
<b>Total Cash Flows from Operating Activities</b>	<b>124,911</b>	<b>35,071</b>
<b>Cash Flows from Investing and Financing Activities</b>		
Receipts from sale of property, plant and equipment	-	4,348
Payments to acquire property, plant and equipment	(67,388)	(47,962)
Payments to purchase investments	-	(100,000)
Loans made to other parties	-	2,100
Cash flows from other investing and financing activities	111,675	(41,123)
<b>Total Cash Flows from Investing and Financing Activities</b>	<b>44,287</b>	<b>(182,637)</b>
<b>Net Increase/(Decrease) in Cash</b>	<b>169,198</b>	<b>(147,566)</b>
<b>Bank Accounts and Cash</b>		
Opening cash	41,186	188,752
Closing cash	210,383	41,186
<b>Net change in cash for period</b>	<b>169,198</b>	<b>(147,566)</b>

# Statement of Accounting Policies

St Marks Society

For the year ended 30 June 2021

'How did we do our accounting?'

## Basis of Preparation

The entity has elected to apply PBE SFR-A (NFP) Public Benefit Entity Simple Format Reporting - Accrual (Not-For-Profit) on the basis that it does not have public accountability and has total annual expenses equal to or less than \$2,000,000. All transactions in the Performance Report are reported using the accrual basis of accounting. The Performance Report is prepared under the assumption that the entity will continue to operate in the foreseeable future.

## Revenue

Revenue is measured at the fair value of the consideration received or receivable for the sale of goods and services, to the extent it is possible that the economic benefits will flow to the Society and revenue can be reliably measured.

Interest income is recognised as interest income is received.

Unconditional grant and donation income is recognised at it has been received. Conditional grant income is recognised when the income is received and the specified conditions attached to the grant have been performed.

## Goods and Services Tax (GST)

The entity is registered for GST. All amounts are stated exclusive of goods and services tax (GST) except for accounts payable and accounts receivable which are stated inclusive of GST.

## Income Tax

St. Marks Society is a non profit entity and is registered under the Charities Commission and is exempt from paying income tax.

## Bank Accounts and Cash

Bank accounts and cash in the Statement of Cash Flows comprise cash balances and bank balances (including short term deposits) with original maturities of 90 days or less.

## Trade and Other Receivables

Accounts Receivable are recognised initially at fair value and subsequently measured at amortised cost using the effective interest method, less an allowance for any uncollectable amounts. Individual debts that are known to be uncollectable are written off in the period that they are identified.

## Property, Plant and Equipment

Property plant and equipment has been valued at historical cost less any accumulated depreciation.

Depreciation has been charged to the statement of Financial Performance at rates shown below

Land and buildings 0% to 40% DV  
Furniture & Fittings 14% to 30% DV  
Motor Vehicles 20% to 30% DV  
Office Equipment 20% to 67% DV  
Plant and equipment 10% to 48% DV

Changes in Accounting Policies

There have been no changes in accounting policies. Policies have been applied on a consistent basis with those of the previous reporting period.

Going Concern

The Society continues to adopt the Going Concern assumption in preparing the performance report as the Society has, in opinion of the Executive Committee, adequate resources to continue operations in the foreseeable future.

Notes to the Performance Report

St Marks Society  
For the year ended 30 June 2021

	2021	2020
<b>1. Analysis of Revenue</b>		
<b>Donations, fundraising and other similar revenue</b>		
Donations - Bamford Law Limited	-	1,250
Donations - B J Greenall	1,200	-
Donations - Cornerstone	-	500
Donations - Daljit Singh	1,000	-
Donations - I R Tannock	530	340
Donations - Jamie Sigmund	-	500
Donations - L J Macdonald	500	-
Donations - Marlborough Christian Aid Trust	500	-
Donations - Penrith Limited - J & R Cuddon	2,000	-
Donations - RJ Russell	-	750
Donations - Supporting Families Marlborough	-	900
Donations - Vavasour Trust	20,000	20,000
Donations - Wakefield-Dunn	-	500
Donations - Zonta Club of Marlborough	500	-
Donations - Court	4,789	3,682
Donations - Other	2,705	9,570
<b>Total Donations, fundraising and other similar revenue</b>	<b>33,724</b>	<b>37,992</b>
<b>Fees, subscriptions and other revenue from members</b>		
Other Revenue	638	4,865
Subscription Income	248	300
<b>Total Fees, subscriptions and other revenue from members</b>	<b>886</b>	<b>5,165</b>
<b>Revenue from providing goods or services</b>		
ACC - Referral	37,304	-
BDDI (Drink Driving Courses)	12,000	12,000
Counselling Services Income	-	170
Department of Corrections	120,250	120,981
Aftercare House - "Te Rito Arahi "- Revenue	33,480	217
Marlborough District Health Board	758,883	727,002
Methodist Mission - Housing First	49,436	63,681
Private Clients	8,652	11,930
Resident's Board	82,579	101,747
Residents' Payments	(2,698)	1,807
<b>Total Revenue from providing goods or services</b>	<b>1,099,887</b>	<b>1,039,536</b>
<b>Interest, dividends and other investment revenue</b>		
Interest Income	3,177	6,152
<b>Total Interest, dividends and other investment revenue</b>	<b>3,177</b>	<b>6,152</b>
<b>Other revenue</b>		
Depreciation recovered	-	2,583

Employment Subsidy	1,784	-
<b>Total Other revenue</b>	<b>1,784</b>	<b>2,583</b>

	2021	2020
--	------	------

2. Analysis of Expenses

<b>Volunteer and employee related costs</b>		
Accident Compensation Levies	2,487	1,659
Employment Costs	2,174	17,230
Employer Kiwisaver Contributions	19,303	17,859
Salaries	663,198	742,925
Staff Expenses	7,436	-
Supervision	2,198	5,231
Training	1,684	3,151
<b>Total Volunteer and employee related costs</b>	<b>698,480</b>	<b>788,055</b>

<b>Costs related to providing goods or services</b>		
Aftercare House - Other Expenses	7,068	-
Aftercare House - Power	-	277
Aftercare House - Rent	26,000	2,500
Accounting Fees	17,021	16,659
Advertising	2,401	284
Bank Fees	130	229
Certification Audit - HDANZ	-	4,450
Cleaning	412	2,211
Client Management System (CMS)	392	-
Client Related Expenses	2,970	3,095
Computer Consumables & Repairs	6,955	4,720
Computer Server Lease	1,903	3,262
Conferences	-	1,073
Consulting	828	2,553
Doctor	-	316
Email Monthly User Fees	409	768
General Expenses	-	271
Household	56,407	51,607
Insurance	31,071	26,133
Interest Expense	5	22
Light, Power, Heating	18,884	14,021
Medical Expenses	22,083	4,207
Meeting Expenses	645	937
Motor Vehicle Expenses	9,731	5,796
Office Expenses	228	94
Printing & Stationery	10,838	9,872
Rates	2,734	2,714
Rebuild Interruption Costs	9,675	-
Repairs and Maintenance	55,964	33,420

These notes form part of the performance report. The performance report and associated financial statements should be read in conjunction with the attached Reviewer's Report.

	2021	2020
Review Fees	1,050	1,100
Subscription Expense	12,951	7,851
Support Staff - Contracted	150	-
Telephone & Internet	5,865	6,952
Travel - International	-	3,057
Travel - National	4,898	11,637
Tutors	7,700	13,325
Website	276	376
<b>Total Costs related to providing goods or services</b>	<b>317,644</b>	<b>235,789</b>

<b>Other expenses</b>		
Bad Debts	-	52
Depreciation	26,278	30,025
Entertainment	1,272	1,053
Entertainment - Non deductible	1,463	1,172
Gifts	1,261	1,340
Loss of Sale of Asset	299	2,426
<b>Total Other expenses</b>	<b>30,573</b>	<b>36,069</b>

	2021	2020
--	------	------

3. Analysis of Assets

<b>Bank accounts and cash</b>		
ASB Visa - Tere (Cancelled)	(1,580)	-
ASB New Build Account	96,792	-
ASB Cheque Account	62,512	49,712
ASB Visa - Hatarei	-	(647)
ASB Visa - Paul	(2,400)	(7,879)
Savings on Call	55,060	-
<b>Total Bank accounts and cash</b>	<b>210,383</b>	<b>41,186</b>

<b>Debtors and prepayments</b>		
Accounts Receivable	71,420	80,002
<b>Total Debtors and prepayments</b>	<b>71,420</b>	<b>80,002</b>

<b>Other current assets</b>		
St Marks Chartiable Foundation	100,000	100,000
<b>Total Other current assets</b>	<b>100,000</b>	<b>100,000</b>

	2021	2020
--	------	------

4. Analysis of Liabilities

<b>Employee costs payable</b>		
Holiday Pay Payable	38,056	38,561
PAYE Payable	16,540	15,561
Wage Accrual	18,826	20,700
<b>Total Employee costs payable</b>	<b>73,422</b>	<b>74,822</b>

These notes form part of the performance report. The performance report and associated financial statements should be read in conjunction with the attached Reviewer's Report.

	2021	2020
<b>Other current liabilities</b>		
Accrued Expenses	1,100	1,100
GST	12,381	18,495
Receipts in Advance	-	-
Rounding	-	-
<b>Total Other current liabilities</b>	<b>13,481</b>	<b>19,595</b>

	2021	2020
<b>5. Property, Plant and Equipment</b>		
Land and Buildings	1,354,618	1,335,085
Plant and Equipment	50,248	64,265
<b>Total Property, Plant and Equipment</b>	<b>1,404,866</b>	<b>1,399,350</b>

## 6. Accumulated Funds

<b>Accumulated Funds</b>		
Opening Balance	1,753,435	1,721,921
Accumulated surpluses or (deficits)	92,762	31,514
<b>Total Accumulated Funds</b>	<b>1,846,197</b>	<b>1,753,435</b>
<b>Total Accumulated Funds</b>	<b>1,846,197</b>	<b>1,753,435</b>

## 7. Capital Commitments

As at 19th October 2021 the Board has committed to incur \$1,306,175 ( GST Incl., subject to cost increase contingencies, ) to rebuild & furnish the Men's Accommodation wing, with an estimated completion date of late February 2022. As of 30 June 2021, \$70,996 has been spent on the project.

(Last Year: The board committed to spend approximately \$1,100,000 to rebuild the Men's accommodation wing. A professional cost estimator estimated the total cost of the structure to be \$920,000. The board estimated that an additional \$180,000 was needed to interface the rebuild to the existing structure.)

## 8. Contingent Liabilities and Guarantees

From time to time the Society receives funding from various community funders. Until such time as an accountability report is completed demonstrating that the funds have been used for the purposes approved, there is a contingent liability in that some funds may be required to be repaid to the funder.

	2021	2020
<b>9. Related Parties</b>		
<b>Loan Balances</b>		
St Marks Charitable Foundation	100,000	100,000
<b>Total Loan Balances</b>	<b>100,000</b>	<b>100,000</b>
<b>Total Related Parties</b>	<b>100,000</b>	<b>100,000</b>

These notes form part of the performance report. The performance report and associated financial statements should be read in conjunction with the attached Reviewer's Report.

## 10. Events After the Balance Date

### COVID 19

The New Zealand government implemented a nationwide level 4 lock down on 17 August 2021 in response to an out break of the Delta Variant of COVID-19. The Alert level was lowered to level 3 on 31 August 2021 and to level 2 on 7 September for areas outside of Auckland. Due to the short duration of the lockdowns the impact on the entity operations was minimal. The entity also continued to receive funding from its main providers so the financial impact of the lockdowns was also minimal

(Last Year: In 21 March 2020 the New Zealand government implemented a nationwide lockdown with various "alert levels" in response

to the COVID 19 pandemic. Prior to the balance date the country shifted between 4 alert levels which had differing effects on the societies operations. At level 4 the society could not admit new patients, at level 3 regional detox facilities were still closed and at level 1 operations were largely unaffected. The country moved to level 1 on 1 June 2020 and remained so until 12 August 2020.

Between 12 August and 21 September 2020 the country moved to alert level 2 and patients were admitted to the regional detox programme during this period as a "backlog". Patients wishing to be admitted to St Marks during this period were put on a wait list to be later admitted post regional detox admission. This event did not impact the societies core funding and hence the financial impact will likely be minor.)

## 11. Ability to Continue Operating

The entity will continue to operate for the foreseeable future.

These notes form part of the performance report. The performance report and associated financial statements should be read in conjunction with the attached Reviewer's Report.

## INDEPENDENT REVIEW REPORT

### Report on the St Marks Society Financial Statements for the year ended 30<sup>th</sup> June 2021

We have reviewed the accompanying 2021 financial statements of St Marks, which comprise the statement of financial position as at 30<sup>th</sup> June 2021, and the statement of financial performance, statement of changes in equity and statement of cash flows for the year ended on that date, and a summary of significant accounting policies and other explanatory information.

The members of the Incorporated Society are responsible for the preparation of the financial statements and for such internal control as the members determine is necessary to enable the preparation of the 2020 financial statements that are free from material misstatement, whether due to fraud or error.

#### Our responsibility

Our responsibility is to express a conclusion on the 2021 financial statements based on our review. We conducted our review in accordance with NZ SRE 2410 *Review of Financial Statements Performed by the Independent Auditor of the Entity*. NZ SRE 2410 requires us to conclude whether anything has come to our attention that causes us to believe that the financial statements, taken as a whole, are not prepared in all material respects. As the reviewer of St Marks Society, NZ SRE 2410 requires that we comply with the ethical requirements relevant to the review of the annual financial statements.

A review of 2021 financial statements in accordance with NZ SRE 2410 is a limited assurance engagement. The reviewer performs procedures, primarily consisting of making enquiries, primarily of persons responsible for financial and accounting matters, and applying analytical and other review procedures.

The procedures performed in a review are substantially less than those performed in an audit conducted in accordance with International Standards on Auditing (New Zealand). Accordingly we do not express and audit opinion on those financial statements.

Other than in our capacity as assurance practitioner we have no relationship with, or interests in, St Marks Society.

#### Conclusion

Based on our review, nothing has come to our attention that causes us to believe that these 2021 financial statements of St Marks Society do not present fairly, in all material respects, the financial position of the Incorporated Society as at 30<sup>th</sup> June 2021, and of its financial performance and its cash flows for the year ended on that date.



Date: 3/11/21

69 Cleghorn Street  
Redwood Village  
Blenheim

